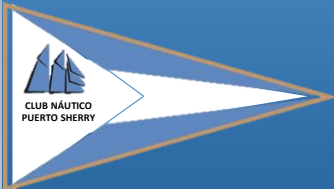


# Puerto Sherry F-18 Worlds in Spain 2019



## BID BOOK Club Náutico Puerto Sherry

April 2017 Rafael Martín-Prat de Abreu.  
catamaran@clubnauticopuertosherry.com  
El Puerto de Santa María, Cádiz, Spain



2019 F18 Worlds – Why choose Puerto Sherry, El puerto de Santa María, Cádiz Bay, Spain?

# Puerto Sherry, El Puerto de Santa María

Located at the heart of the Bay of Cadiz, one of the best race course in Southern Europe, Puerto Sherry is a magnificent marina with over 842 hundred moorings and second to none marina services and facilities: boathouse with travelift capacity up to 200T, asphalt ramp and ample stay to practice sailing, power and water supply, waste collection, dry dock, seamanship 24h, private security, CCTV, wireless, and much more...

It is situated in El Puerto de Santa María which in turn, is placed on the Atlantic coast of the Bay of Cádiz, near the municipalities of Jerez de la Frontera, where there is an Airport, Rota, Puerto Real, and Cádiz. It is popular for its sherry and for its beaches, which are the town's principal tourist attraction



2019 F18 Worlds – Why choose Puerto Sherry, El puerto de Santa María, Cádiz Bay, Spain?

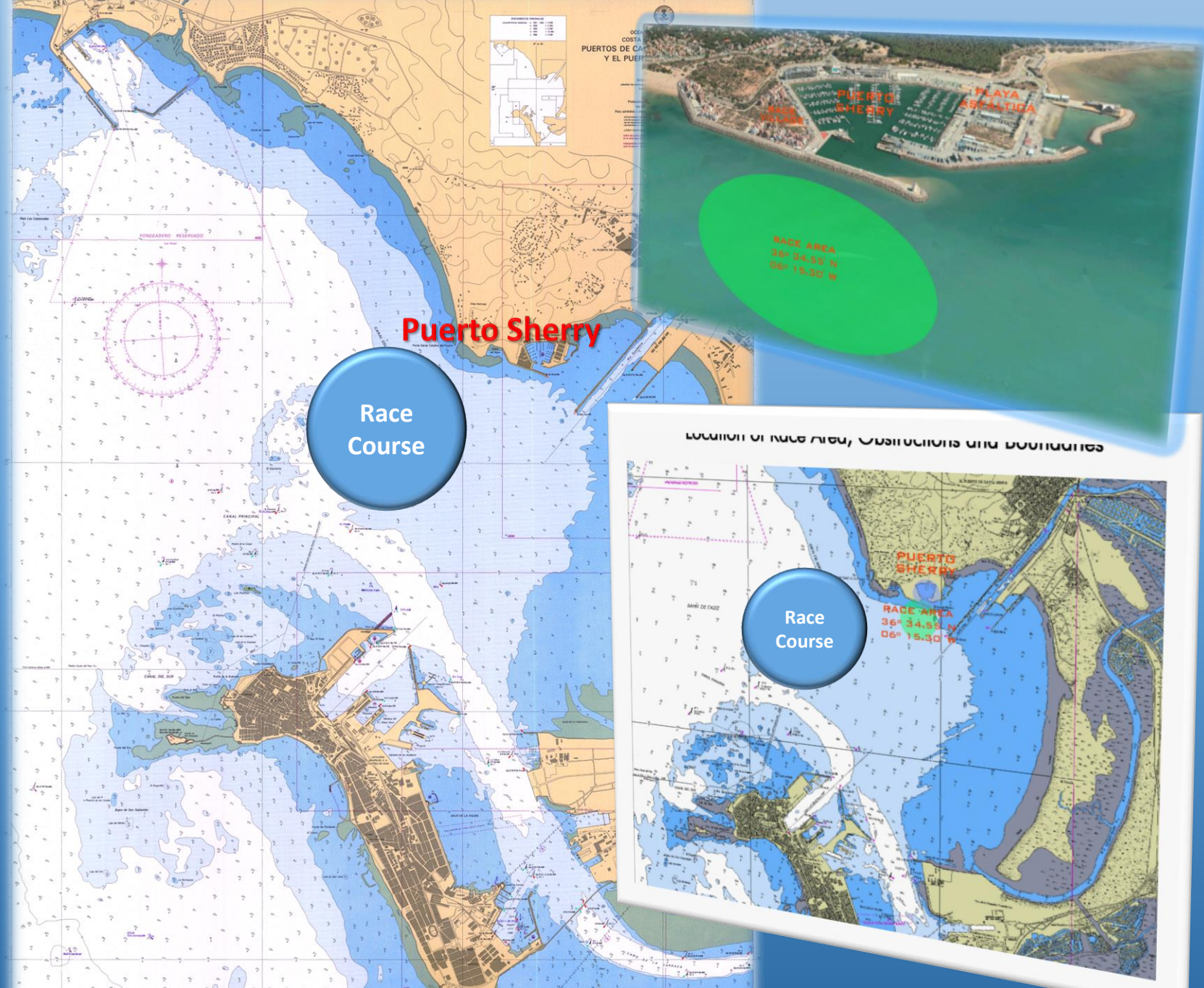
# RACE COURSE

The Bay of Cádiz, Spanish Bahía de Cádiz, small inlet of the Gulf of Cádiz on the North Atlantic Ocean. It is 7 miles (11 km) long and up to 5 miles (8 km) wide, indenting the coast of Cádiz province, in southwestern Spain.

It receives the Guadalete River and is partially protected by the narrow Isle of León, on which the major port of Cádiz is located.

Other ports along the bay include Rota to the north, El Puerto de Santa María and Puerto Sherry to the northeast, Puerto Real to the east, and San Fernando to the south.

The Regatta Course at the beautiful Bay of Cádiz is one of the most acclaimed venues for international sailing events.



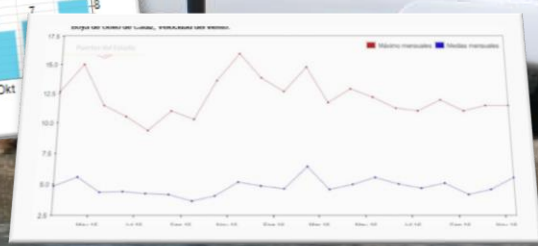
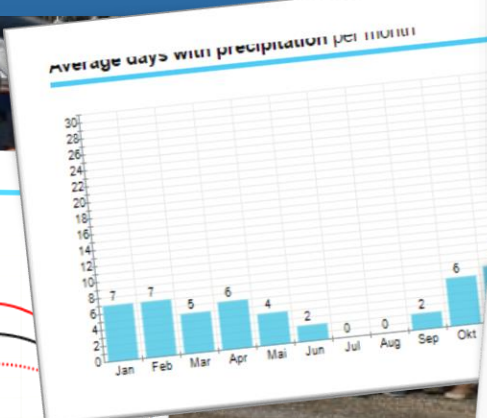
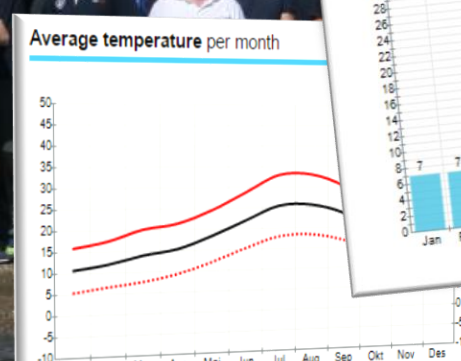
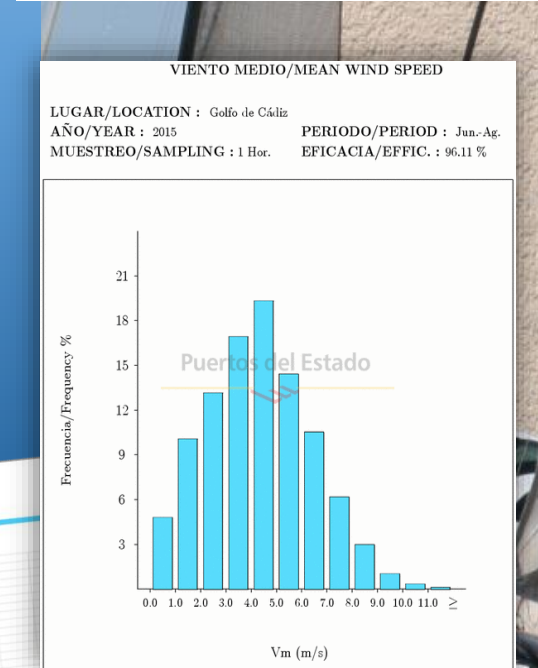
# WEATHER CONDITIONS

The Bay of Cádiz, on the southern Atlantic coast of Spain, has become a popular winter training base for many teams all over Europe. Winters are short and mild, with relatively low rainfall and a high number of hours of sunshine.

With an annual average temperature of 21 °C, El Puerto de Santa María has perfect conditions for sailing with NW 12-18 knots/annual media.

The winds characteristics of El Puerto de Santa María are Levante and Poniente, needed to practise nautical sports and that turn the Bay of Cádiz into one of the best places in the world for yacht and dinghy sailing boats races. Wind never Fails!!

Perfect sailing conditions from May to September. It is an ideal time to do tourism too and enjoy a holiday in the south of Spain



2019 F18 Worlds – Why choose Puerto Sherry, El puerto de Santa María, Cádiz Bay, Spain?

# VENUE

## Port instalations of Puerto Sherry in El Puerto de Santa Maria

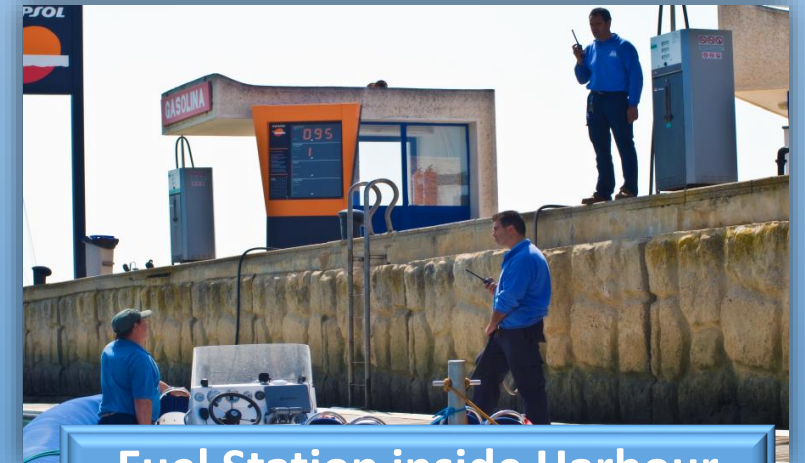
Basin	788 moorings for boats (6 - 50 m length)
Dry marina	Storage for 500 motor boats (4 - 8 m length)
Slipway	25.000m <sup>2</sup> of tarmac (incl. electricity and water points), 3 pools travelift, 1 forklift, repair shops, ship chandlers, yacht brokers
Ramp	1785 hectares of sheltered water
Other services	Electricity (230 and 400 V), VHF9 (24 h), public telephones, S.O.S., Hotel****, shops (in the hotel), meteorological service, patrol station, running water, Red Cross, Security 24 h, fire brigade, laundry service, restaurants and bars, services and showers, Information (in the hotel), oil recycling points, rigging/ sails shop, heliport

The dry dock has two Travelifts of 200Tm and 50Tm, in addition to a Forklift 10Tm, with 3 pits of stranding of 4.5 meters draught. It has 22,000 m<sup>2</sup> of surface for winter storage of boats and work area, equipped with electrical outlets and water, as well as all the services necessary to meet all needs.

The dock has 842 berths afloat from 5 to 60 metres in length. All the moorings have water, electrical outlet, lighting crew 24 hrs. finger lateral to the access, security for CCTV, control of access to the shore with security 24 hrs and free parking.



Travelifts



Fuel Station inside Harbour



Berthing with guarded access



Sufficient parking spaces

# VENUE

The Race Committee shall have sufficient experience to manage the Championships (race officers (IRO) and event chairmen (PRO))



Measurement tent



Race Office



Desk Jury room



Press office



Free wifi area

# Very Important: The asphalt slipway

The asphalt slipway is 167 metres long, allowing dry dock facilities for all types of light craft. It also has two wharves and 3-ton crane. The asphalted slipway has hosted a large number of events and high-level regattas, the most highly regarded of which are the 1992 World Championship and the 2003 ISAF Olympic Class Word Championship.

The Sailing Federation of Andalucia has its head offices next to the Puerto Sherry installations, and to be especially noted is the 'Puerto Sherry School of Sailing' as well as a Specialized Centre for Competitive Training in Sailing, designed for elite sportsmen and women. It is located at one end of the beach and there are usually a number of world- class competitors present there for the regattas that attract the best of the international sailing community.





### Hotels

Luxury hotels, near the beach, downtown, charming. Hotels in palaces, convents, manor houses, etc...., all that and more you can find in El Puerto de Santa María.



### Touristical Apartments

You can choose apartments with all amenities located in the historical center, or if you just want to enjoy our beaches, apartments near the coast.



### Inns and Guesthouses

List of Inns and Guesthouses of our city, cheaper accommodation, but attractive and charming.

# ACCOMMODATION

El Puerto de Santa María is one of the main summer tourist destinations of Spain and boasts a wide range of apartments and houses to rent, hotels (from B&Bs to 5-star hotels) and a camping site. Most of the available accommodation is within 5 minutes by car from the venue, although some flats, two hotels and the camping site (with the alternative of cabins) are within 5 minutes on foot. As the proposed dates are out of season, accommodation is available at very reasonable rates.

The organisation will appoint an official agency, with a proven track record in events of this type, and will ensure that attractive packages are negotiated with the hotels, camping site and self-catering accommodation.



### Campsite

In El Puerto you will find Playa Las Dunas Campsite, 1st Class, located in area of pine forest and dunes and beachfront.



# Getting to El Puerto de Santa María

Andalusia is well connected to the rest of the world and it is easy to get to El Puerto de Santa Maria once you're in Spain. There are several major airports (Jerez, Seville, Malaga) in the area of El Puerto if you are coming from somewhere outside of Spain.

## Useful Links:

Aena: To see the flights that operate to any airport in Spain. Select the airport you wish to see the connections for in "choose an airport". [Click Here](#)

Renfe: national train connections. Note that El Puerto de Santa Maria may be listed under "P" rather than "E". [Click Here](#)

Local Train Connections, this is for when you are getting a train from somewhere in the province of Cadiz to El Puerto de Santa Maria.

Transport from Jerez Airport: List of transport possibilities from Jerez airport to El Puerto de Santa Maria and vice versa (version April 2017). [Click Here](#)



By air

Jerez Airport is only 12 kilometres from El Puerto de Santa María and has regular connections with Madrid and Barcelona. Different European airlines provide direct flights with several capitals. These flights could be subject to timetable changes depending on the season.



By land

Bus connections with the capital in addition to regular lines to the different towns in the province. Acces roads to the city with their own vehicle.



By train

Direct service from El Puerto de Santa María to Seville, Cordoba, Madrid, Zaragoza and Barcelona. Suburban trains from El Puerto de Santa María to different cities in the province.

## By air

- Jerez de la Frontera is the closest but smallest airport and has many flights to and from different countries. From Jerez you can take a bus, train or taxi to El Puerto, which takes about half an hour.
- Sevilla airport is the next closest and a slightly bigger airport. From the airport it is very easy to get to El Puerto: there are buses that take you to Sevilla train station (Santa Justa) from where you can take a direct train (click on Renfe link above) to El Puerto, there are apx. 10-15 trains daily and the cost is around 18€ one way.
- Malaga airport is the biggest airport in the area and has the most connections with many cities and countries from around the world. All the cheap airlines operate out of the airport and cheap flights are nearly always available. You can take the train to Dos Hermanas (one stop before Seville) and then to El Puerto
- Madrid. Flying into Madrid (Barajas) airport is another option as there are many flights to Madrid from all over the world, from where you can take a connection flight to Jerez or take a train (Seville and soon El Puerto are connected by the high speed AVE train) or bus.

\*Barcelona airport is also an interesting option if you are arriving from somewhere within Europe and then take a connecting flight to Andalucía.

## Información de interés

## - Relevant Information

Aeropuerto de Jerez - Cádiz	Jerez Airport
Información General General Information	Carretera N-IV, Km 7, Jerez de la Frontera Centralita: 956 150 000 Información general: 956 150 083 Fax Aeropuerto: 956 150 061
Iberia	Teléfono Aeropuerto: 956 150 010 Información y reservas: 902 400 500 E. Perdidos: 902 341 342 Fax Aeropuerto: 956 150 048 <a href="http://www.iberia.com">www.iberia.com</a>
Ryanair	Teléfono Aeropuerto: 956 150 152 <a href="http://www.ryanair.com">www.ryanair.com</a>
Datos de todas las aerolíneas que operan en el aeropuerto en el siguiente enlace: <a href="#">Compañías Aéreas</a>	
Aeropuerto de Sevilla - San Pablo	- Seville Airport
Información General	954 218 800
Aeropuerto de Gibraltar	- Gibraltar Airport
Información General	956 773 026

## By train and bus

El Puerto is well connected to all of Spain and even has a high speed train connection with Madrid and Seville. Go to the Renfe (Spain's train company) website, link at top of page, to get the most up to date information on train times and connections.

The image shows a screenshot of the Renfe website's booking interface. On the left, there is a form with fields for 'DEPARTURE', 'DESTINATION', 'JOURNEY DATE', 'DEPARTURE' (with a date of 03/04/2017), 'RETURN', 'ADULTS' (set to 1), 'CHILDREN 4-13', 'CHILDREN 4-4', 'TYPE OF PASSENGER' (with options for 'RENFE JOVEN 50' and 'TARJETA DORADA'), 'PETS', 'ATENDO SERVICE', and 'PROMOTIONAL CODE'. A 'BUY' button is at the bottom of the form. On the right, there is a sidebar with icons for 'T+H' (Train + Hotel), a car, and a bed. Below the sidebar, there is a banner that says 'WE HAVE ANYTHING FOR YOUR TRIPS RENFE VIAJES'. At the bottom of the page, there is a navigation bar with links for 'RENFE VIAJES', 'SAN SEBASTIÁN 2016', 'AVE MADRID - CÓRDOBA', 'TRAIN & FLY', and 'PAYPAL'.



Do you want to see more?  
PleaWatchse, these videos

[About Puerto Sherry](#)

[About El Puerto de Santa María](#)



2019 F18 Worlds – Why choose Puerto Sherry, El puerto de Santa María, Cádiz Bay, Spain?



<http://www.puertosherry.com/en>

<http://www.puertosherrymeteo.com>



2019 F18 Worlds – Why choose Puerto Sherry, El puerto de Santa María, Cádiz Bay, Spain?



<http://www.elpuertodesantamaria.es/>

<http://www.fav.es>

<http://www.catassur.com>



2019 F18 Worlds – Why choose Puerto Sherry, El puerto de Santa María, Cádiz Bay, Spain?

# Experiences

In the quantitative analysis below you can see the events we organised in 2016, I believe they speak for themselves; I would highlight the classic sailing week and the redbull event. We include hyperlinks to back the information we have given to you.

<https://catassur.files.wordpress.com/2017/04/quantitative-analysis-el-puerto-con-la-vela-program.pdf>

<http://www.fav.es>

<http://semanaclasica.com>

<http://www.catassur.com>

<https://www.facebook.com/New-Years-Race-Bay-of-Cadiz-163865766435/>

<https://www.facebook.com/carnavalrace/>



Red Bull Foiling  
Generation In  
Puerto Sherry 2016



[Red Bull  
Link 1](#)



[Red Bull  
Link 2](#)

# Family & Friends & holidays

Not only this venue is attractive for sailors, also family and friends will love to be part of this event. The Bay of Cádiz's pleasant sailing conditions, central location, and a range of accommodations for varying budgets, make Puerto Sherry a unique and exciting venue.

You should not hesitate to bring your children along, we have a baby sitting service – day and night - to ensure you can enjoy the event with your family while making sure everybody can rest





# What does the registration fee cover?

- Entry fee : 250 € / boat
- What is included For skipper and crew in the registration fee:
  - F18 participation
  - Important discounts in hotels and camping sites
  - Boat parking free from 15 days before the event and up to 15 days after
  - Opening ceremony
  - Midweek dinner
  - Prizegiving dinner
  - Different events for your family while you sail
  - A very good environment and guaranteed party!
  - And more.....



# Race facilities:

- Race office - Jury meeting room
- Press office - Media Center with Wireless Lan, photocopying machine, fax, etc.
- Measurement zone
- Partners & collaborators area including technical and commercial stands
- Wide Boat Park ( 1.800 m. beautiful sandy beach including boat washing facilities )
- Trailer Parking (quad shuttle)
- Repair facilities: sail makers, boat builders ...



# Reviews



It is my belief that the level of hopes that sailors bring when they come to race to Puerto Sherry, both wind and sea conditions, as well as entertainment on land, are overwhelmed by the reality they find. We have a venue for sailing sports, which is unique in every way.

Valle de la Riva – President of the Club Náutico Puerto Sherry

We are delighted to support the Club Náutico Puerto Sherry to host the F18 Worlds in 2019, in Puerto Sherry. The Andalusian Sailing Federation has always been totally committed to supporting Sailing sports. We are proud to share with you that Puerto Sherry has consolidated the Bay of Cadiz as a winter training base for teams from all over Europe.”

Francisco Coro, President of the Andalusian Sailing Federation



Puerto Sherry a family marina at the heart of the Cadiz bay, with 842 mooring's, one of the largest asphalt slipways and all the needed facilities, to practice sailing and to host, top level event's all year round

Enrique López-Bosh, Executive Director of Puerto Sherry



**Catamaran, wind, amazing sailing in the great Cadiz bay surrounded by ancient historic towns = the world championship in Spain.**

Andalucia in southern Spain is something out of this world ! Don't just hear about it, come and enjoy it! We will do our best so it's one of the best championships! What are you waiting for to discover us!!!

Rafael Martín-Prat, C.E.O. Puerto Sherry F18 Worlds 2019

**2019 F18 Worlds – Why choose Puerto Sherry, El puerto de Santa María, Cádiz Bay, Spain?**

# Contacts

Club Nautico Puerto Sherry

Av. de la Libertad, S/N,

11500 El Puerto de Santa María

Cádiz –Spain

Latitud: 36°34'38"N Longitud:6°15'15"W

<http://www.catassur.com>

<http://www.clubnauticopuertosherry.com>

+34 956 86 00 60 [info@clubnauticopuertosherry.com](mailto:info@clubnauticopuertosherry.com)

Rafael Martín-Prat de Abreu.

<https://www.facebook.com/rafael.martinpratdeabreu>

[catamaran@clubnauticopuertosherry.com](mailto:catamaran@clubnauticopuertosherry.com)



# BID TO HOST

The organisation will have the backing of regional and local authorities, together with private sponsors, to ensure quality racing during event



## See you in Cadiz!

